

LIFE SKILLS ASSESSMENT - TERM 4

GRADE 1

TABLE OF CONTENTS		
Description	Page	Marks
Section A : Beginning Knowledge		
Parts of a plant	1	8
Picture maps	2	4
Uses of water	3	10
Saving and wasting water	4	8
Day and Night	5	10
		40
Section B: Creative Arts		
Performing Arts	6	15
Visual Arts (Different homes)	7	10
Visual Arts (Safe Drinking water)	8	5
		30
Total		70



Parts of a plant

Use the words from the boxes to label these plants.

roots

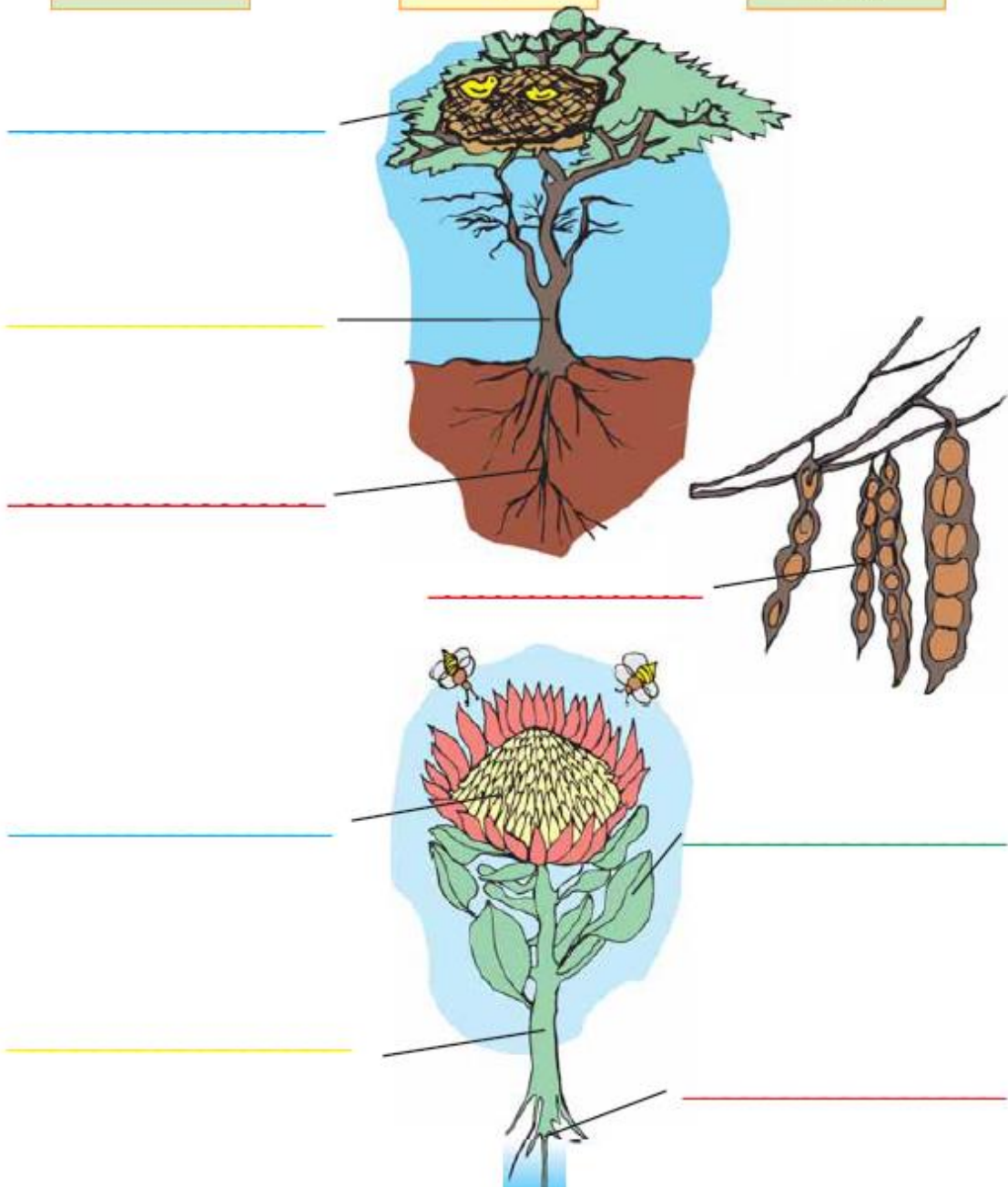
trunk

leaf

flower

seedpod

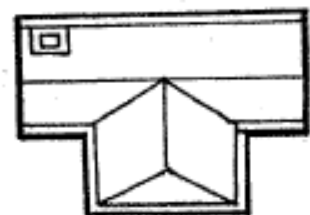
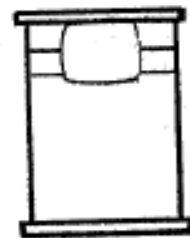
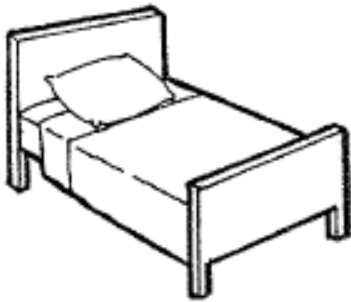
stem





Picture maps

Match each picture on the left to the bird's-eye view on the right.





Uses of water

We use water every day; look at the different ways in which we use water. Next to each picture write what water is used for, by using the following captions:

To put out fires	To wash ourselves	To help plants grow
To wash dishes and clothes		To cook food









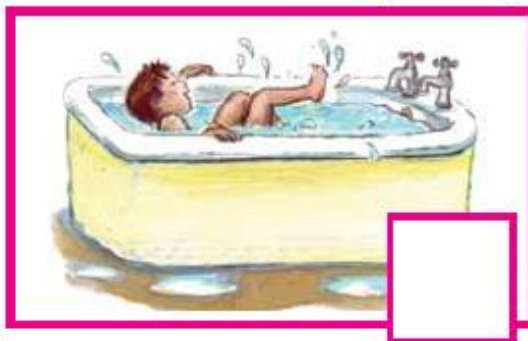
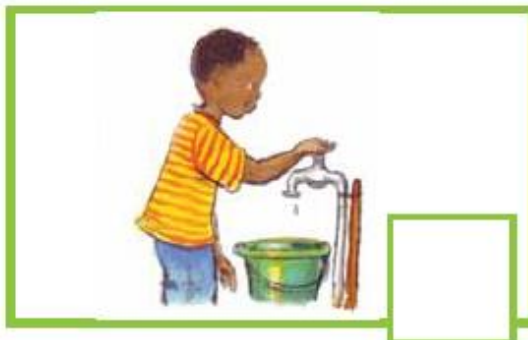
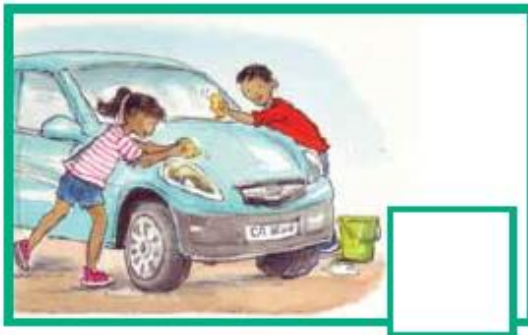


_____ / 10 Marks



Saving and wasting water

Look at these pictures. Make a tick (✓) next to each picture in which water is used carefully, and a cross (✗) next to each picture in which water is wasted.





Day and Night

1. Write "Day" or "Night" above each picture



2. Match the picture with the correct word.



Full moon



Half moon



Crescent moon

_____ / 10 Marks

Performing Arts

Saving and Wasting Water

The learner makes movements or dances around whenever the teacher says the different ways of saving water.

The learner freezes whenever the teacher mentions a way in which water is wasted.

Rubric					
Marks	0-3	4-6	7-9	10-12	13-15
Description	Learner struggles to follow instructions and move accordingly	The learner listens and moves accordingly but get confused easily.	The learner listens and moves accordingly but makes a lot of mistakes.	The learner listens and moves accordingly. Makes a few mistakes.	The learner listens carefully and moves accordingly with confidence.

----- / 15 Marks



Visual Arts

Draw two different homes that you have seen

A large, empty rectangular box with a black border, intended for drawing a home.A large, empty rectangular box with a black border, intended for drawing a home.

My house

made with

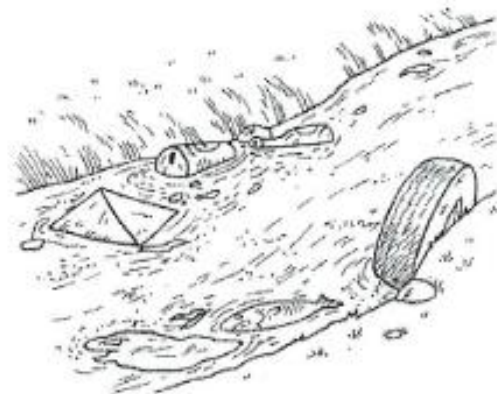
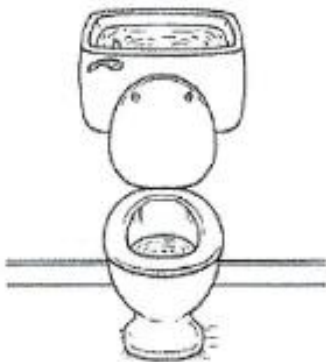
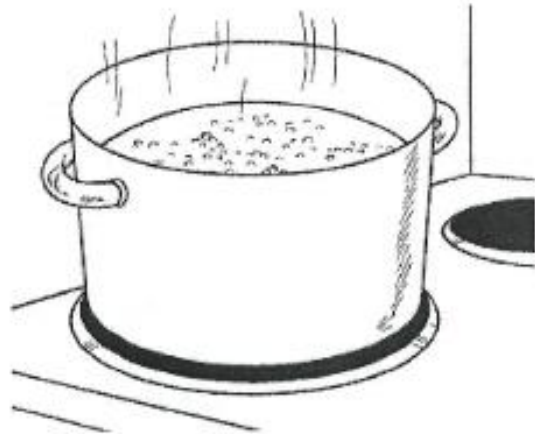
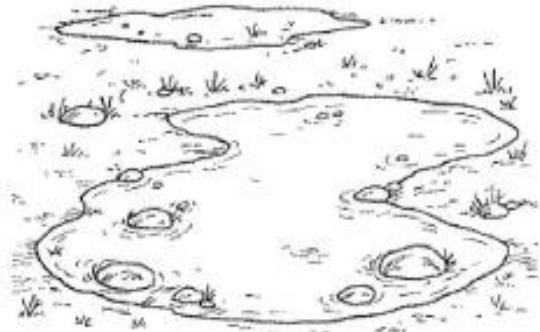
A large, empty rectangular box with a black border, intended for drawing a house.A small, empty rectangular box with a black border, intended for writing materials.A small, empty rectangular box with a black border, intended for writing materials.A small, empty rectangular box with a black border, intended for writing materials.

bricks, clay, wood, roofing tiles, grass, metal

_____ / 10 Marks



Colour the pictures that show the water that is safe to drink.



_____ / 5 Marks